

XFO-670

OPTICAL FIBER FUSION SPLICER

COMCAST GROUP



Content

Introduction3

Masterpiece4

Metal Body4

Core Parts Quality Assurance.....5

THE TOOLBOX6

3 IN 1 FIBER HOLDER8

The Battery Popup Automatically8

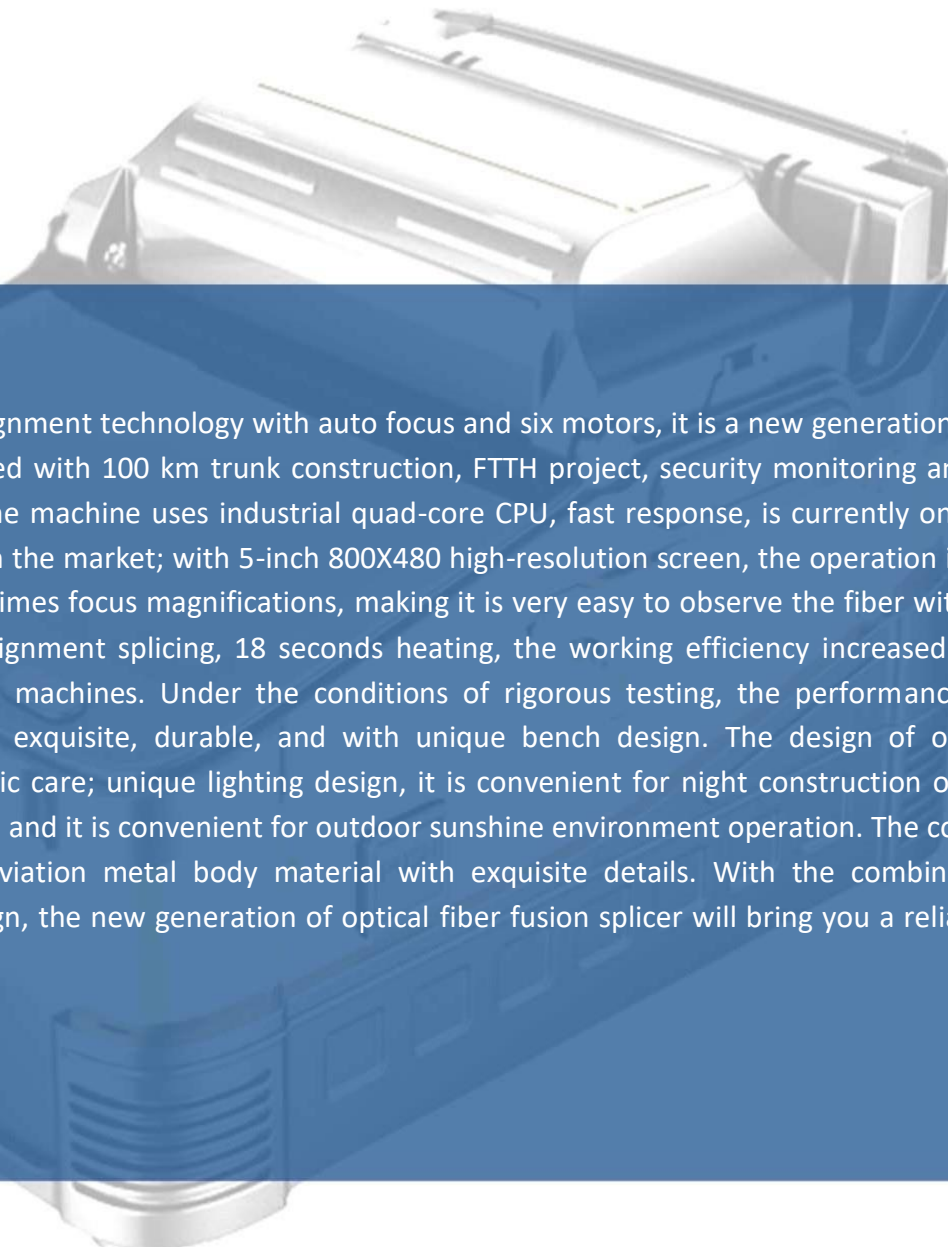
Can Charge the Phone9

Basic Parameter10

Accessories in the tool box.....11

SIZE12

Introduction



XFO-670 use the latest core alignment technology with auto focus and six motors, it is a new generation of fiber fusion splicer. It is fully qualified with 100 km trunk construction, FTTH project, security monitoring and other fiber cable splicing projects. The machine uses industrial quad-core CPU, fast response, is currently one of the fastest fiber splicing machine in the market; with 5-inch 800X480 high-resolution screen, the operation is simple and intuitively; and up to 300 times focus magnifications, making it is very easy to observe the fiber with naked eyes. 8 seconds speed core alignment splicing, 18 seconds heating, the working efficiency increased by 50% compared to ordinary splicing machines. Under the conditions of rigorous testing, the performance is still outstanding; toolbox is small, exquisite, durable, and with unique bench design. The design of operating platform reflects the humanistic care; unique lighting design, it is convenient for night construction or repair. Screen brightness is adjustable, and it is convenient for outdoor sunshine environment operation. The core parts are using imported brands, aviation metal body material with exquisite details. With the combination of advanced technology and design, the new generation of optical fiber fusion splicer will bring you a reliable and comfortable user experience.

Masterpiece

High-End Luxury



□ Once splicing to 50,000 times replacement a new machine

Metal Body

Aesthetic Details



□ 18 patent results
□ Lifetime free warranty

Core Parts Quality Assurance



Siemens stepper motor

Roth ROUST linear guide

Sanyo lithium battery

Aviation metal material

THE TOOLBOX

COMES WITH A STOOL TO FACILITATE THE CONSTRUCTION WORKERS.



Remove the stool



Fiber cleave operator station



Do not need to take out splicer machine from the toolbox while working.



layers Two

Stool can bear

10k



Lighting for splicer Convenient for operation

We are so hard only for you



INDUSTRIAL QUAD-CORE CHIP CPU



Synchronous
operation

speed
response

no
jammed

super
experience

3 IN 1 FIBER HOLDER

SM, MM, bare fiber, pigtail, rubber-insulated, multi fiber cable



The Battery Popup Automatically



780mA high-capacity
lithium

- charging time ≤ 3.5
- continuous splicing and about 200 times



Press to
the battery

THE BATTERY POPUP AUTOMATICALLY

Can Charge the Phone



Intimate care, just understand you



If your phone is out of power at outdoor, our machine can charge your phone, ensure you can contact your family members or colleagues in time.

Basic Parameter

Fiber alignment	Core/cladding alignment / Manual alignment	Built-in lighting	easy for night operation
Splicing time	8S	Tension Test	Standard 2N
Heating time	18S	Fiber holders	3 in 1 fiber holder, SM, MM, bare fiber, pigtail, rubber-insulated, multi fiber cable
Heating mode	Automatic heating (Preheating)	Magnification	300 for X or Y view, 150 for X or Y view
Focus mode	Six motors Auto focus	Screen	5 inch TFT color display
Applicable Fibers	SM(G.652&G.657)、MM (G.651) 、DS(G.657)、NZDS (G.655)	Splicing Mode	Normal / high precision splicing
Splice Loss	0.025dB (SM) 、0.01dB (MM) 0.04dB (DS/NZDS)	Splicing record storage	Synchronize to the phone, the server to cloud storage unlimited
Control technology	Real-time control and calibration of fusion ARC	Built-in battery	7800 mA high-capacity lithium battery, charging time ≤ 3.5 hours, continuous splicing and heating about 200 times
Return loss	Better than 60DB	Power supply	Input AC100-240V 50 / 60HZ, output DC13.5V / 4A, the current power mode can be identified, real-time detection of battery power
Fiber diameter	Cladding Diameter : 80-150μm Coating Diameter : 100-1000μm	Operating Conditions	Temperature -15 ~ +50 °C, humidity: <95% RH (no condensation) Working altitude: 0 ~ 5000m. Resist max. wind speed: ≤ 15m / s
Fiber Cleave Length	Coating less than 250μm : 8-16mm Coating less than 250-1000μm:16mm	Shrinkable tube	60mm、40mm

Accessories in the tool box



Fiber Cleaver



Spare electrode



Wire stripping pliers



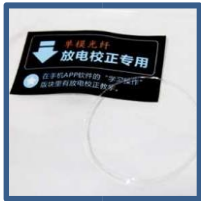
Miller stripper



Hex key



Carrying case



Fiber for
ARC calibration



Strap



Power Adapter



Alcohol Bottle



Brush



User's manual
Quality Certificate
Warranty Card

SIZE

