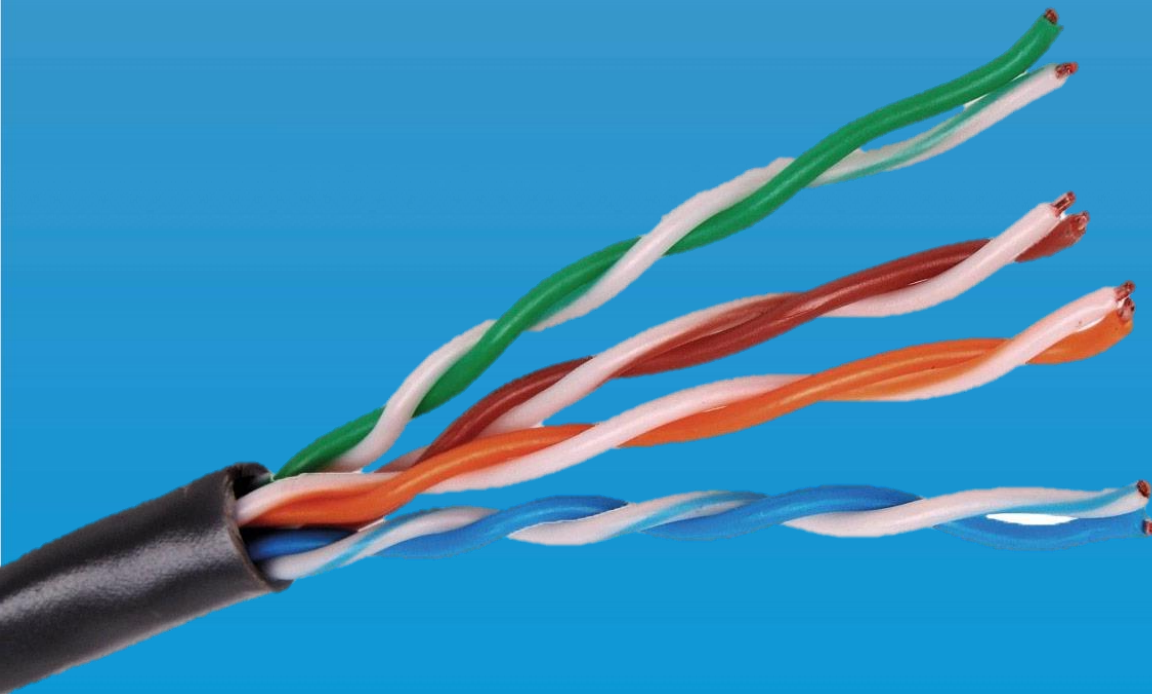


CAT5E UTP Outdoor/Indoor CCA whit Jelly

COMCAST GROUP



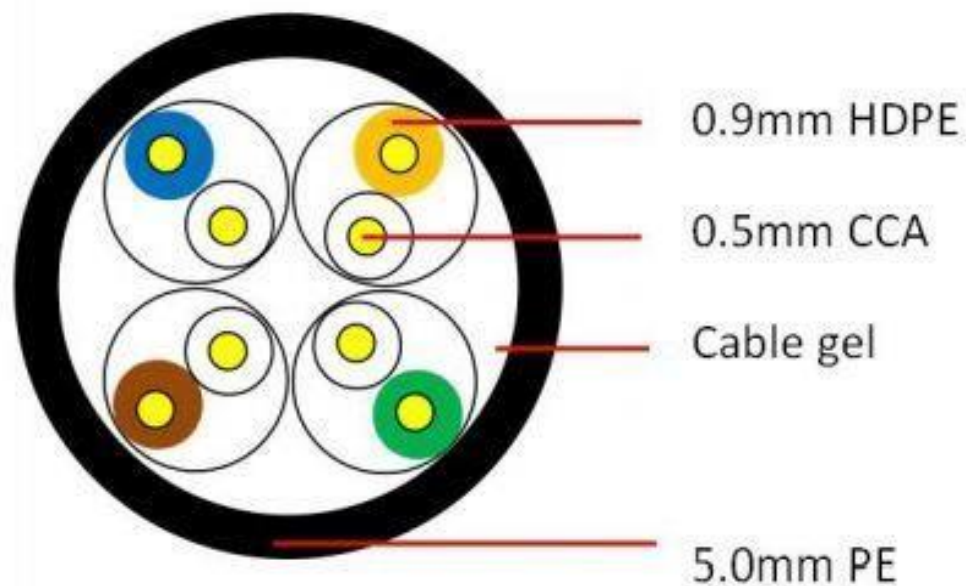
Content

Appliacation	3
Drawing.....	3
Electronic Characteristics	4
Standard / Certificate.....	4
Electrical Characteristics	5
Test Summary	6
Printing & Packag.....	7

Appliacation

- 1.Exceeds ANSI/TIA-568B. 2 and ISO 11801 2nd Edition Class E Category 5e channel standards.
2. Exceed requirements of ANSI/TIA-568B. 2nd IEC 61156-5 Category 5e Component standards;
3. Meets requirements of IEEE 802.3af and IEEE 802.3at for PoE applications.
4. Length cable marking enable easy identification of remaining cable which reduces installation time and cable scrap.
5. Color Availability: Additional cable colors

Drawing



Electronic Characteristics

Impedance: 100 ± 15 (ohms).

Rated Temperature: 75° C DC

Resistance unbalance(%): Max2.5 DC

Resistance 20° C: 14.6(Ohms/100m)

Pair-to-Ground Capacitance Unbalance: 330(Pf/100m)

Transfer Impedance: Max 10 mohms/m@100MHz.

Installation Resistance: >5000MΩ

*KM Dielectric strength: DC 2500V 2S

Standard / Certificate

Reference Standard: YD/T1019-2001,ISO/IEC11801,ANSI/TIA/EIA - 568B

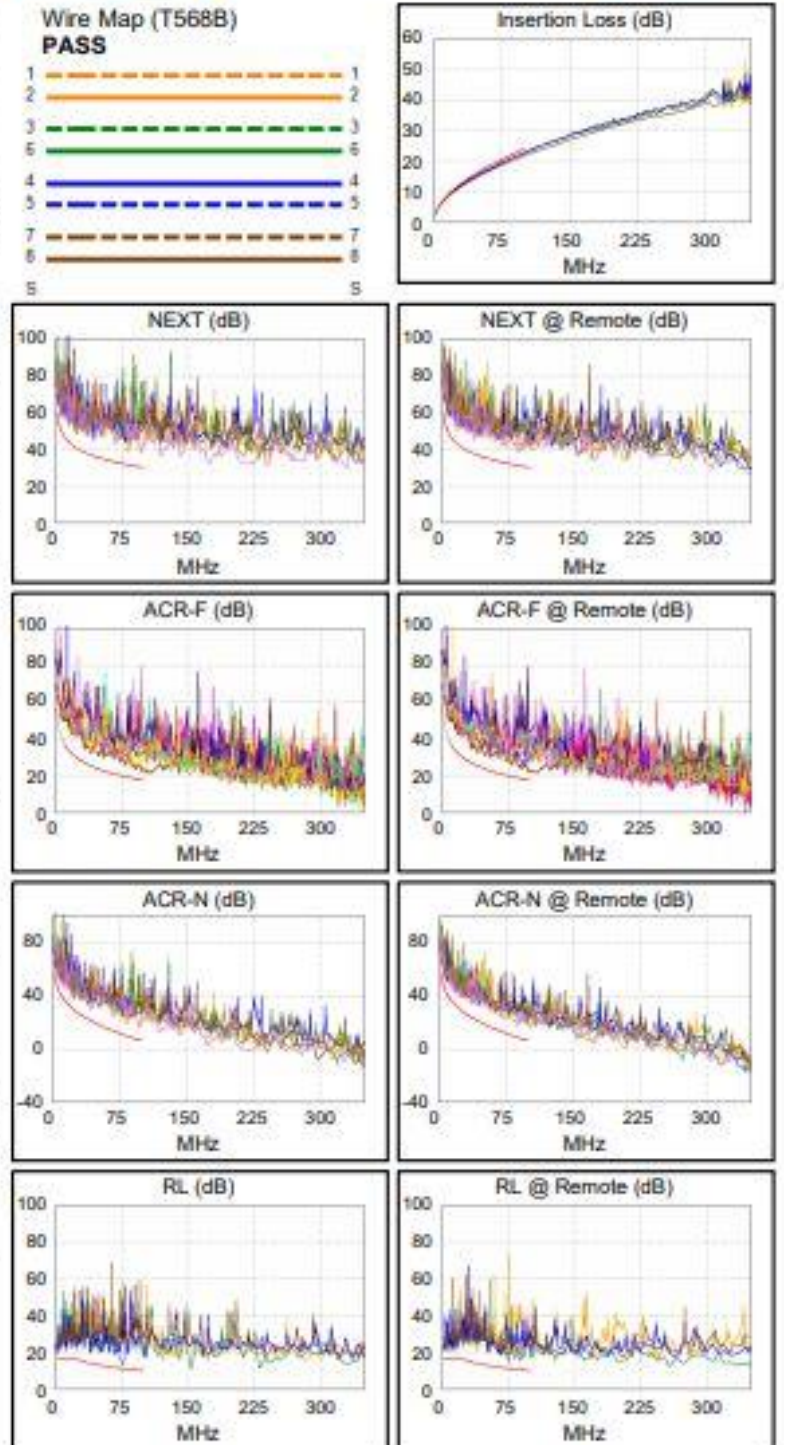
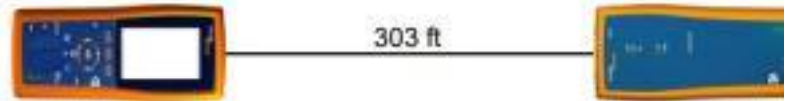
Certificates ISO9001,14000, ROHS.

Electrical Characteristics

Electrical Characteristics(CAT 5e)								
Frequency	Impedance	SRL	Attenuation	Next	Next	Elfext	Elfext	Nominal
Mhz	ohm	dB	dB/100m	Worst Pair	Power Sum	Worst Pair	Power Sum	Velocity
				dB	dB	dB	dB	Propagation
0.772	100±15	19.4	1.8	67	64	66	63	0.65
1		20	2	65.3	62.3	63.8	60.8	
4		23	4.1	56.3	53.3	51.7	48.7	
8		24.5	5.8	51.8	48.8	45.7	42.7	
10		25	6.5	50.3	47.3	43.8	40.8	
16		25	8.2	47.3	44.3	39.7	36.7	
20		25	9.3	45.8	42.8	37.7	34.7	
25		24.3	10.4	44.3	41.3	35.8	32.8	
31.25		23.6	11.7	42.9	39.9	33.9	30.9	
62.5		21.5	17	38.4	35.4	27.8	24.8	
100		20.1	22	35.3	32.3	23.8	20.8	

Test Summary

Length (ft), Limit 328	[Pair 78]	303
Prop. Delay (ns), Limit 555	[Pair 36]	455
Delay Skew (ns), Limit 50	[Pair 36]	9
Resistance (ohms)	[Pair 36]	26.2
Insertion Loss Margin (dB)	[Pair 45]	1.1
Frequency (MHz)	[Pair 45]	100.0
Limit (dB)	[Pair 45]	24.0



Worst Case Margin Worst Case Value

PASS	MAIN	SR	MAIN	SR
Worst Pair	45-78	12-36	12-36	45-78
NEXT (dB)	7.0	6.3	7.5	7.0
Freq. (MHz)	42.3	5.5	97.3	88.3
Limit (dB)	36.5	51.3	30.3	31.0
Worst Pair	45	12	36	45
PS NEXT (dB)	8.9	8.1	10.2	9.3
Freq. (MHz)	42.3	5.4	97.3	86.3
Limit (dB)	33.5	48.4	27.3	28.2

PASS	MAIN	SR	MAIN	SR
Worst Pair	36-45	45-36	36-45	45-36
ACR-F (dB)	4.0	4.2	4.0	4.2
Freq. (MHz)	99.3	99.3	99.3	99.3
Limit (dB)	17.5	17.5	17.5	17.5
Worst Pair	45	36	45	36
PS ACR-F (dB)	6.7	6.9	6.7	6.9
Freq. (MHz)	99.3	99.3	99.3	99.5
Limit (dB)	14.5	14.5	14.5	14.4

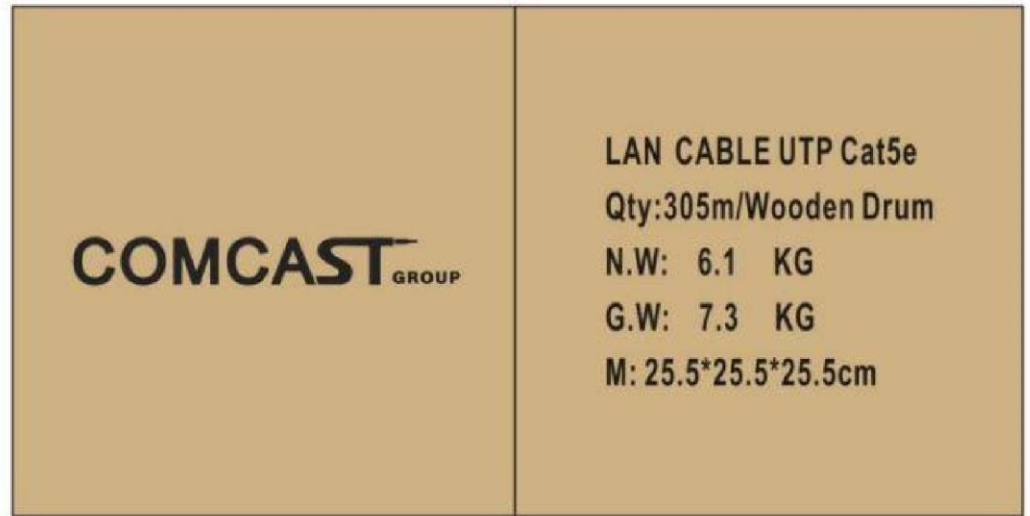
N/A	MAIN	SR	MAIN	SR
Worst Pair	45-78	12-36	12-36	45-78
ACR-N (dB)	8.2	6.5	9.1	9.1
Freq. (MHz)	42.3	5.4	97.5	88.3
Limit (dB)	21.4	46.3	6.6	8.6
Worst Pair	36	12	12	12
PS ACR-N (dB)	9.2	8.2	11.4	11.7
Freq. (MHz)	5.6	5.4	97.5	98.0
Limit (dB)	42.8	43.3	3.6	3.5

PASS	MAIN	SR	MAIN	SR
Worst Pair	36	36	36	36
RL (dB)	1.6	3.5	1.6	3.5
Freq. (MHz)	75.8	75.5	75.8	75.5
Limit (dB)	11.2	11.2	11.2	11.2

Compliant Network Standards:

10BASE-T	100BASE-TX	100BASE-T4
1000BASE-T	2.5GBASE-T	ATM-25
ATM-51	ATM-155	100VG-AnyLan
TR-4	TR-16 Active	TR-16 Passive

Printing & Packag



For More Information

Please visit our website www.comcast-sa.com or contact your local sales representative.

Comcast México

Overseas Sales Subsidiary
Cal. Lázaro Cárdenas #1309
Col. Colón industrial CP.44940
Guadalajara, Jalisco
Tel. +52 33 38607059
Info.mx@comcast-sa.com

Comcast Guatemala

Overseas Sales Subsidiary
20 calle 23-70 Zona 10
Guatemala
Tel. +506 4004 1400
Gerente.gua@comcast-sa.com

Comcast Nicaragua

Overseas Sales Subsidiary
3ra. Entrada las Colinas, Embajada
De cuba 1C, Este, Casa #34
Mangua, Nicaragua
Te, +1809 5711033
Admin.nic@comcast-sa.com

Comcast El Salvador

Overseas Sales Subsidiary
51 Av. Norte # 159 entre calle poniente y
Av. Roosevelt
San Salvador, El Salvador
Tel. +503 7950 4882
Info.sv@comcast-sa.com

Comcast Dominican Republic

Overseas Sales Subsidiary
Winston Churchill No. S, Suite 3F, Distrito
NAcionall
Santo Domingo, Dominican Republic
Te.+ 1 809 571 1033