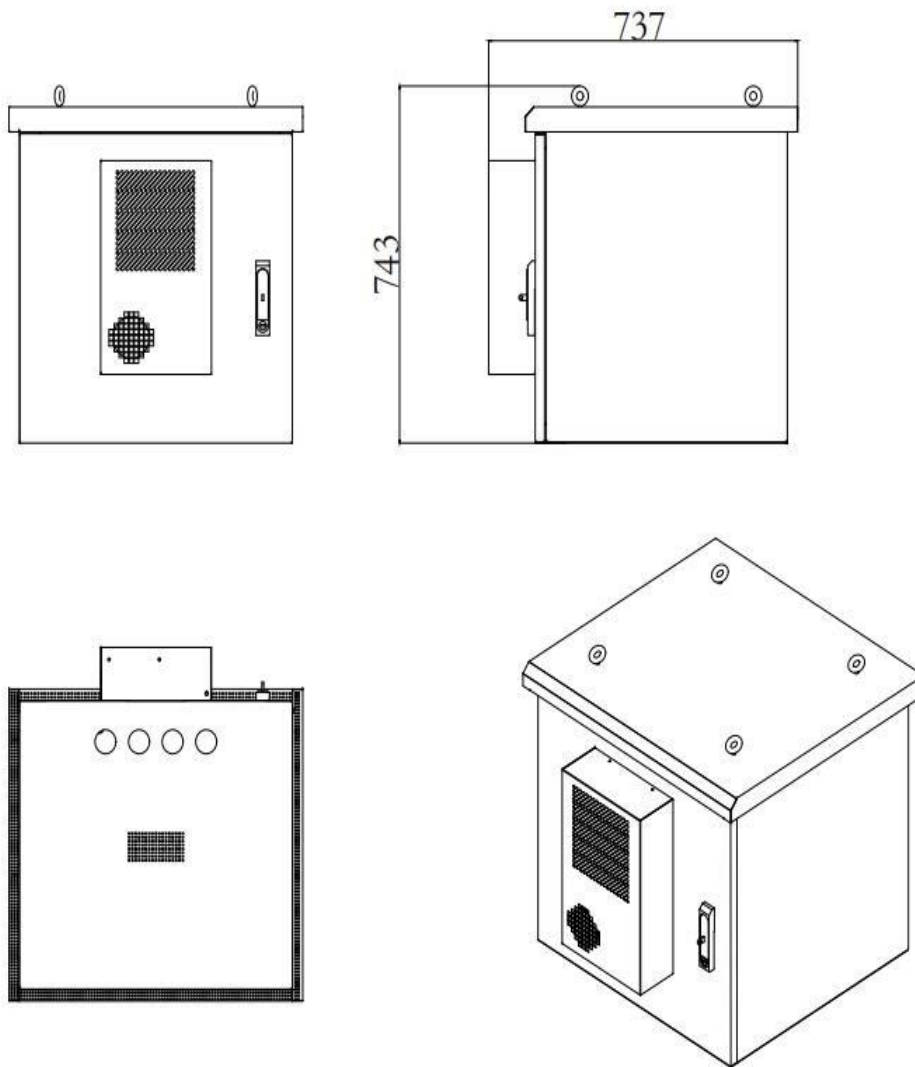


12U Outdoor Pole Mount Cabinet

COMCAST GROUP



Structure

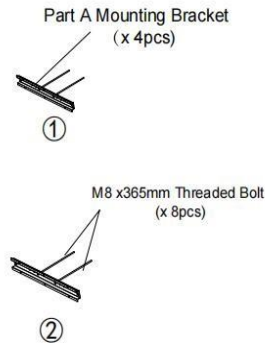


12U Outdoor Pole Mount Cabinet

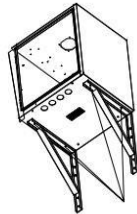
Installation

Pole Mount Installation Manual

Note: Please measure the pending installed pole size and choose the proper mounting hole ,this mounting brackets are designed to mount on 6" to 12" pole.

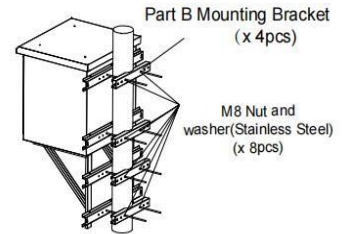


STEP 2: Using M8x15mm screw kits to mount the support bracket to the bottom of cabinet.



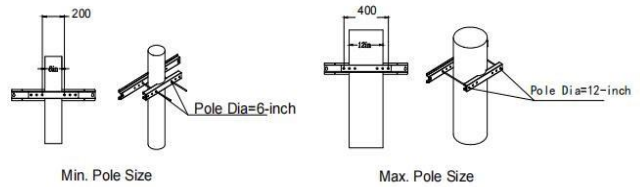
M8x15mm screw kits(stainless steel) (x 4pcs)

STEP 4: Insert the Part B mounting bracket to the long bolt and fasten with M8 Nut and Washer.



STEP 3: Use M8x15mm screw kits (x 20 pcs) to fix Part A Mounting Bracket Kits (STEP 1 Assembly-kits) to the cabinet and support Bracket Kis

STEP 1: Insert the M8 x 365mm threaded bolt to part A mounting bracket, then fasten the bolt.(Assembly -kits).



! For mounting heights less than 7 Feet above grade, excess bolt length may need to cut off in order to prevent a hazardous protrusion.

Specifications

4.1 Specifications of Cabinet

No.	Description		Specification
1	Dimension		650x600x700mm
2	Usable space		12U
3	Configuration		<ul style="list-style-type: none"> - 19" rack, front and rear total 4 pcs - Door lock 1 pc - DC48V LED light - Door sensor 2 pcs, 1 control LED light, 1 alarm - AC air conditioner 400w - DC48V fan 1 pc - Thermostat 1 pc - Grounding bar 1 set made by copper aluminum alloy - Door stopper - Cable entrys at the bottom of cabinet, 6 holes with ϕ 50 pre-installed rubber gaskets
4	Material		Galvanized steel
5	Painting		Electrostatic coating(RAL 7035 gray)
6	Cabinet wall structure and material	Structure	Single layer, 1.5mm thickness
		Insulation layer	NBR, thickness: 20mm
9	Pole mounting material		Galvanized steel, electrostatic coating(RAL 7035 gray), thickness: 2.0mm
10	Door	Front door	Integrated AC-Air conditioner 400w
		Back door	None
11	Door Lock	Material	Galvanized steel
		Lock type	Anti-theft 3 points
12	Protection level		IP55

4.2 Specifications of Air Conditioner

4.2.1 Overview

Cabinet air condition is actively cooling with compressor, and it will remove the heat inside the cabinet to outside. It also can keep the dust and heat outside the cabinet, avoiding problems from using fan. The inside cabinet can be maintained at an ideal temperature for electrical components which effectively guarantees the stability of the electronic equipment and improves the reliability of the whole system.

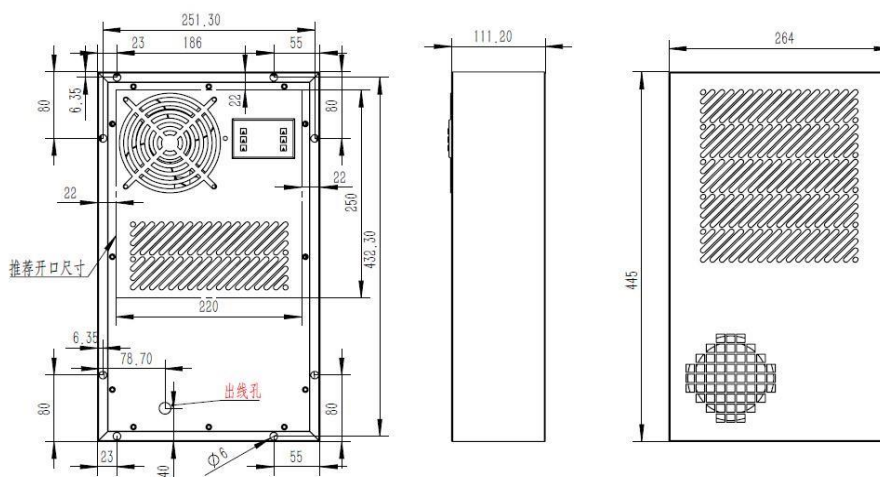
4.2.2 Feature

- 1) Compact structure and easy maintenance
- 2) Compressor brand Panasonic
- 3) CE Certified
- 4) Refrigerant is R134a, which is environment friendly
- 5) Digital temperature controller and high precision of temperature control.
- 6) Protection grade is IP55, can protect cabinet from moisture, dust and water
- 7) Surface treatment outdoor powder painting to anti-corrosion
- 8) Highest operation temperature can reach 55°C
- 9) Life span \geq 70000hr
- 10) Support Modbus RS485 communication

4.2.3 Specifications

Model	SADM104-2
Cooling capacity(L35/L35)	400W
Voltage	220VAC \pm 15% 50/60Hz
Rated Power(L35/L35)	240W
Rated Current	1.09A
Circuit max pressure	26bar
Refrigerant	R134a
Working temperature	-5 $^{\circ}$ C \sim 55 $^{\circ}$ C
Noise	55dB
Weight	15Kg
IP Grade	IP55
Dimension(W\timesD\timesH)	264 \times 111.2 \times 445mm

4.2.4 Dimension drawing



Specifications of DC fan

Item		Specification/Condition	
1	Outline. Dimension	120*120*38mm	
2	Operating Voltage	DC 36 ~ 54V	
3	Rated .voltage	DC 48V	
4	Starting Voltage	DC ≤36V on/off	
5	Rated current	0.64A (Max:1.0A)	Rated .voltage b.25°C 65% RH
6	Power consumption	30.72W (Max:48W)	
7	Speed	5000±10%RPM	c.After testing for 5 minutes
8	Airflow AT ZERO STATIC PRESSURE	242.2CFM(Min : 217.9CFM)	Rated .voltage b. AMCA Standard C. Rated current
	Air .Static Pressure AT ZERO AIRFLOW	34.75mmH20 (Min : 31.27mmH20)	
9	Noise Level	65.5dB-A(Max:68.7d B-A)	a. Rated Voltage b. 18dB Non-Echo Chamber c. Standard: CNS 8753 / ISO 3744 d. Test Condition :ISO 7779 e. Distance: 1.0 M
10	Life expectancy	70000 hrs at	MTTF Mean Time To Failure

		temp40℃ Humidity5% ~ 95%	Conf. Level 90%
11	No.of.Blade	9	
12	No.of.Pole	8P	
13	Rotating Direction	Clockwise/running direction is viewed from the label side	
14	Lock Protection	1.Auto power off after locked at rated voltage for 2 ~ 3 sec. Reduce internal temperature rise 2.After auto power off, circuit attempt to restart in 2 to 6 sec.	
15	Polarity Protection	Open circuit when Vcc & GND are exchanged	
16	Over voltage protelt	NO	
17	Over current protection	YES	
18	fixed constant speed Function	The fan motor can be run at a predetermined speed, exceeds the set voltage, and its speed is constant, the maximum supply voltage to be within the scope of work in	
19	Soft Starting	When the power switch is turned on to supply current to the fan, the current is zero and starts to increase gradually until the fan has achieved its maximum speed and the rated current	
20	PWM function	NO	
21	Operating temperature range	-40 ~ 60℃	

4.4 Specifications of temperature controller(Thermostat)

Model		KTO011/KTS011	Difference	7K (±4K)
Lifespan		>100,000 times	Installation	35mm DIN
Size		60×33×43mm	IP Grade	IP20
Maximum capacity	switch	250VAC,10(2)A 120VAC,15(2)A DC 30W	Wiring	2-pole terminal block 2.5 mm ²



Please visit our website www.comcast-sa.com or contact your local sales representative.

Comcast México

Overseas Sales Subsidiary
Cal. Lázaro Cárdenas #1309
Col. Colón industrial CP.44940
Guadalajara, Jalisco
Tel. +52 33 38607059
Info.mx@comcast-sa

Comcast Guatemala

Overseas Sales Subsidiary
Av. Hincapié 28-45 zona 13
Guatemala city 01013
Tel. +506 4004 1400
Gerente.gua@comcast-sa.com

Comcast Nicaragua

Overseas Sales Subsidiary
3ra. Entrada las Colinas, Embajada
De cuba 1C, Este, Casa #34
Mangua, Nicaragua
Te, +1809 5711033
Admin.nic@comcast-sa.com

Comcast El Salvador

Overseas Sales Subsidiary
51 Av. Norte # 159 entre calle
poniente y Av. Roosevelt
San Salvador, El Salvador
Tel. +503 7950 4882
Info.sc@comcast-sa.com

Comcast Dominican Republic

Overseas Sales Subsidiary
Av. Nuñez de Cáceres #2 Plaza
Comercial Pradosur, Local 102
Santo Domingo, Dominican Rpublic
Te.+ 1 809 571 1033